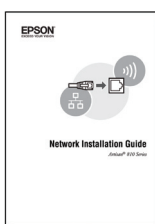
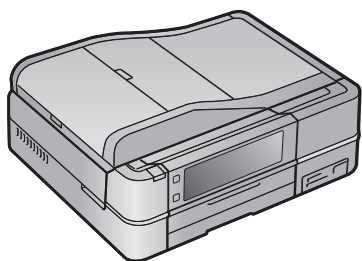
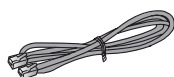


Artisan® 810 Series Start Here

1 Unpack



(Included for
Canada only)



Phone cord



Power cord



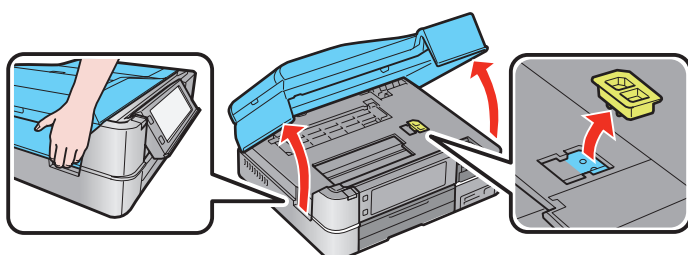
If anything is missing, contact Epson as described on the back.

Caution: Do not open ink cartridge packages until you are ready to install the ink. Cartridges are vacuum packed to maintain reliability.

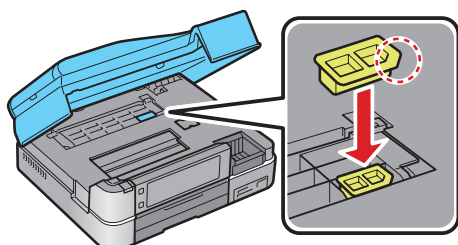
Canada only: For French speakers, remove the sticker from the backing sheet and place it on the right side of the control panel.

Remove all protective materials from the printer, including from inside the paper cassette.

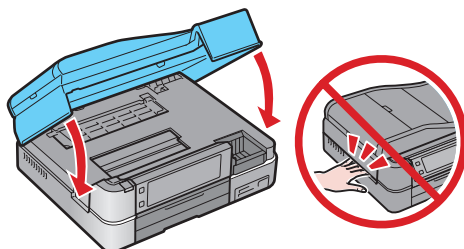
- 1 Raise the scanner and remove the transportation lock.



- 2 Store the transportation lock as shown.



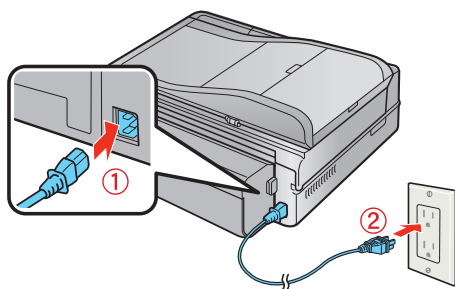
- 3 Lower the scanner.



2 Turn on and adjust

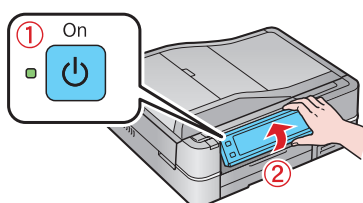
- 1 Connect the power cable.

Caution: Do not connect to your computer yet.



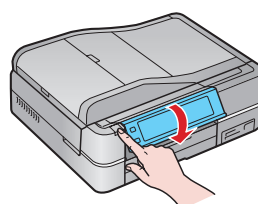
411685500

- 2** Press the **On** button, then raise the control panel.



To lower the control panel, press the **Unlock** button.

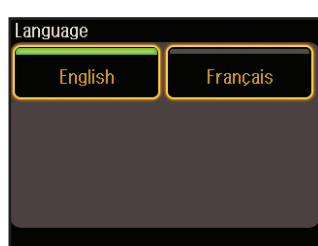
Caution: To avoid damaging your Artisan 810 Series, always press the **Unlock** button to lower the control panel.



3 Make settings

- 1** Select your language and country.

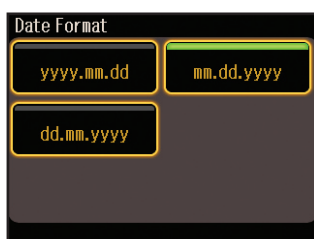
Touch the screen to select the desired option. Press **◀** or **▶** to see more countries.



- 2** For the Daylight Saving Time setting, select **Summer** if your region uses Daylight Saving Time and it's currently in effect. (DST is effective from spring through summer.) Otherwise, select **Winter** to turn off the setting. Press **OK**.



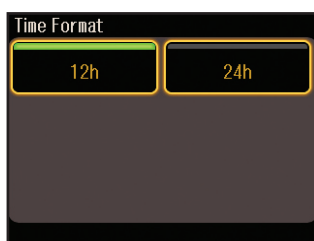
- 3** Select the date format.



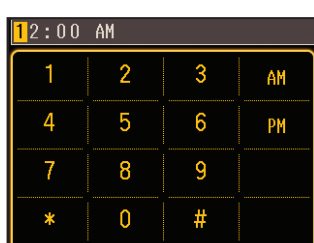
- 4** Use the numeric keypad to set the date, then press **OK**.



- 5** Select the time format.



- 6** Use the numeric keypad to set the time.



- 7** Press **OK** when done.

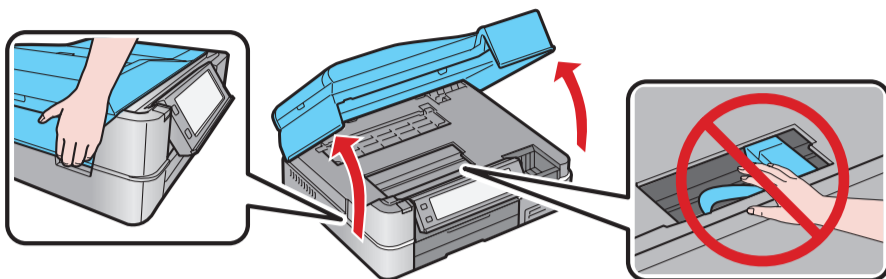
Note: You can change the date and time settings by pressing the **Home** button, selecting **Setup**, selecting **Printer Setup**, then **Date/Time**. For more information on using and adjusting the control panel, see your *Quick Guide*.

4

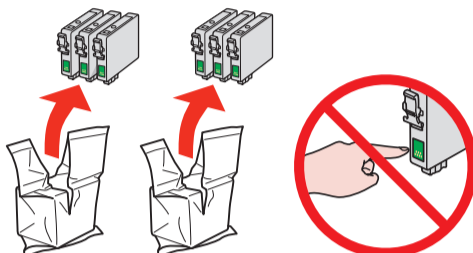
Install ink cartridges

Note: Do not load paper yet.

- 1 Lift up the scanner.

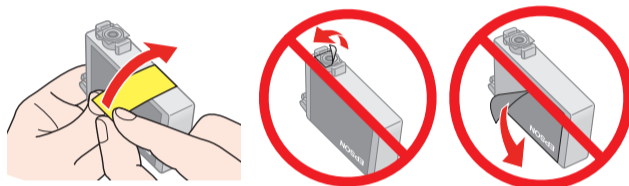


- 2 Unpack the ink cartridges.

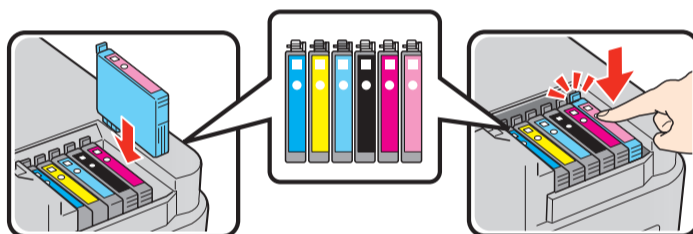


- 3 Remove only the yellow tape from each cartridge.

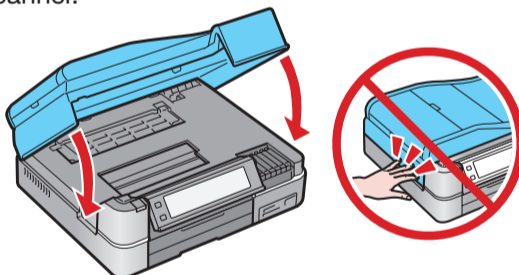
Caution: Don't remove any other seals or the cartridges may leak.



- 4 Insert the cartridges in the holder for each color. Press each cartridge down until it clicks.



- 5 Lower the scanner.



- 6 Wait while ink charges. Charging takes about 5 minutes.

Note: Your Artisan 810 Series ships with full cartridges and part of the ink from the first cartridges is used for priming the Artisan 810 Series. Replacement cartridges will print more pages.

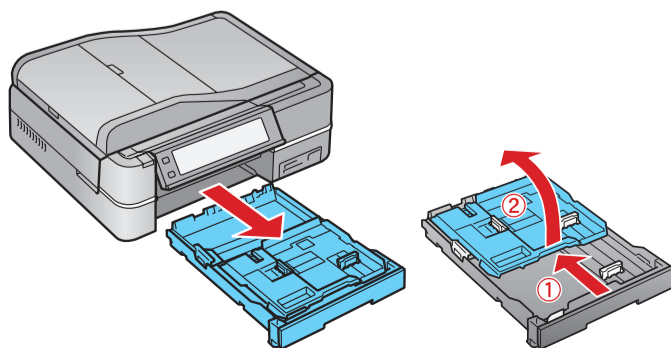
Caution: Don't turn off the Artisan 810 Series while the ink system is initializing or you'll waste ink.

5

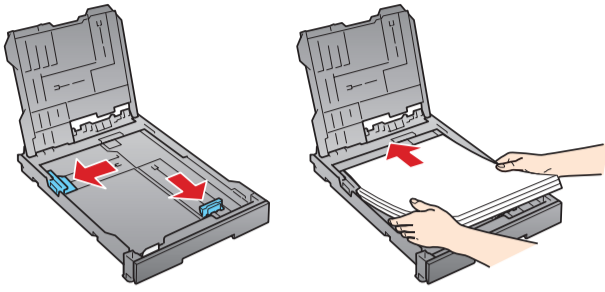
Load paper

The paper cassette has 2 trays. The main tray is for letter-size, legal-size, or 8 x 10-inch paper. The photo tray is for 4 x 6- or 5 x 7-inch photo paper.

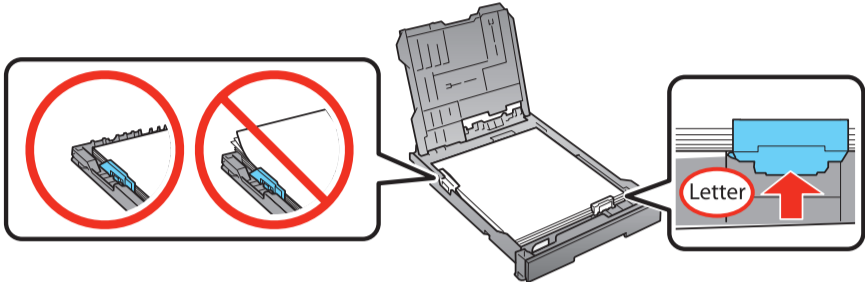
- 1 Pull out the paper cassette. Then slide back the photo tray and lift it up.



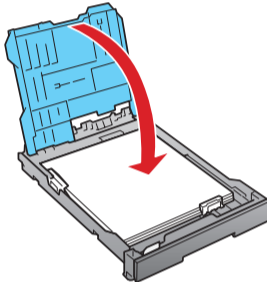
- 2** Squeeze the edge guides and slide them out. Then insert paper with the glossy or printable side face-down.



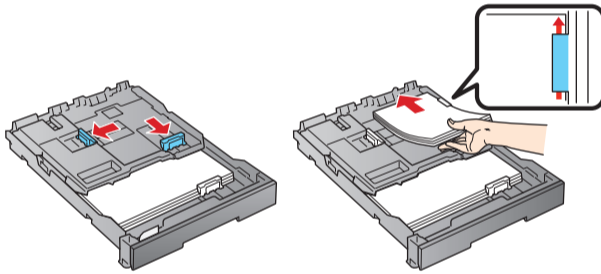
- 3** Slide the edge guides against the paper.



- 4** Lower the photo tray.

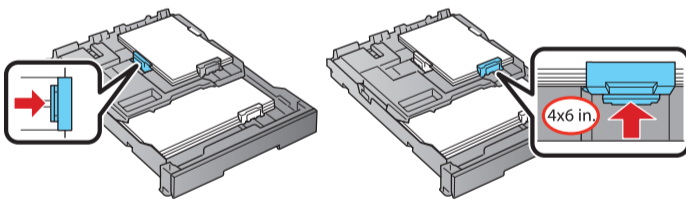


- 5** Squeeze the edge guides and slide them out. Then insert 4 x 6-inch or 5 x 7-inch photo paper with the glossy or printable side face-down.

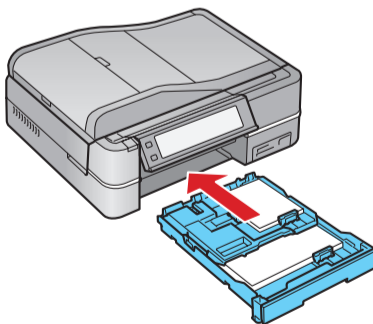


Note: Make sure the paper fits under the edge guides.

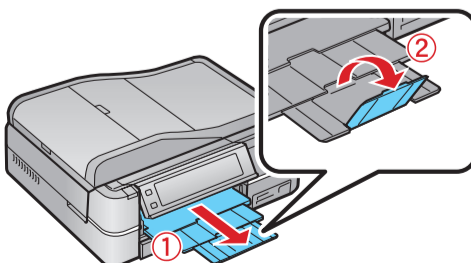
- 6** Slide the edge guides against the paper.



- 7** Keep the cassette flat as you insert it.



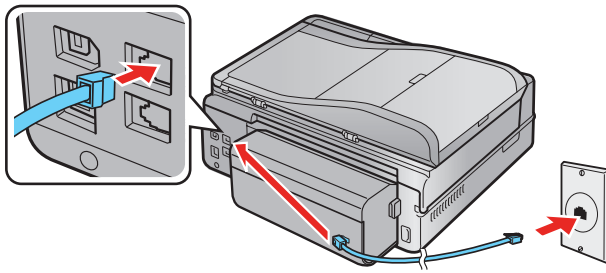
- 8** Extend the output tray and flip up the stopper.



6

Connect the phone cord

To use the Artisan 810 Series for faxing, connect the included phone cord from a telephone wall jack to the **LINE** port on the Artisan 810 Series. To connect a telephone or answering machine, see the *Quick Guide* for instructions.



Note: If you're connecting to a DSL phone line, you must use a DSL filter or you won't be able to fax. Contact your DSL provider for the necessary filter.

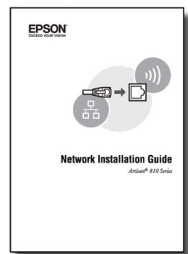
7

Choose your connection

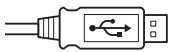


Network (wireless or wired)

See your *Network Installation Guide*. You can't install your software as described below.



OR



USB connection

Make sure you have a **USB cable (not included)**. Then follow the steps below.

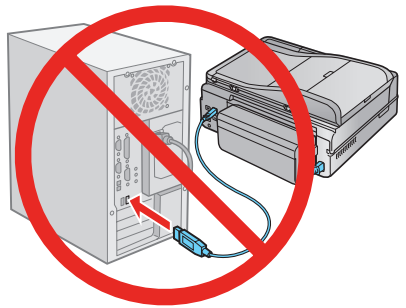


USB connection

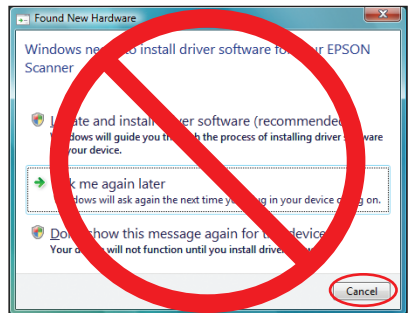
Follow these steps to connect the Artisan 810 Series directly to your computer using a USB cable (not included).

Windows®

- 1 Make sure the Artisan 810 Series is **NOT CONNECTED** to your computer.

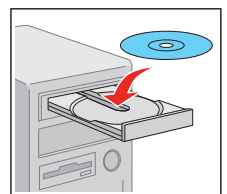


Note: If you see a Found New Hardware screen, click **Cancel** and disconnect the USB cable. You can't install your software that way.



- 2 Insert the Artisan 810 Series software CD.

With Windows Vista®, if you see the AutoPlay window, click **Run Epsetup.exe**. When you see the User Account Control screen, click **Continue**.



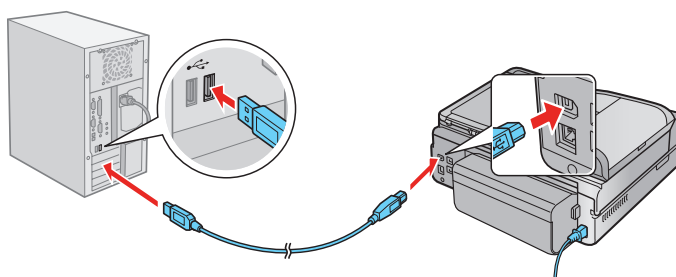
- 3 Click **Install** and follow the on-screen instructions.



- 4** When you see this screen, select **Install driver for direct USB connection** and then click **Next**.



- 5** When prompted, connect a USB cable. Use any open USB port on your computer.



Note: If installation doesn't continue after a moment, make sure you securely connected the USB cable and turned on the Artisan 810 Series.

- 6** Follow the on-screen instructions to install the rest of the software, set up your fax header, and register your Artisan 810 Series.

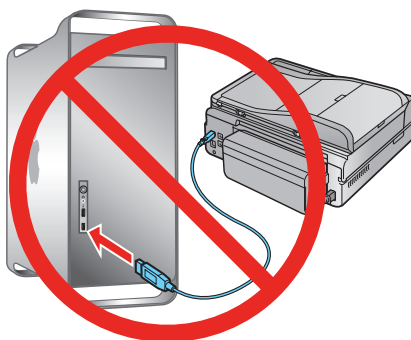
Be sure to register your Artisan 810 Series to receive these great benefits: 2-year limited warranty and 2-year toll-free customer support.*

- 7** When you're done, remove the CD.

You're ready to go! Enjoy your Artisan 810 Series! See your *Quick Guide* or online *Epson Information Center* for instructions.


Macintosh®

- 1** Make sure the Artisan 810 Series is **NOT CONNECTED** to your computer.



- 2** Insert the Artisan 810 Series software CD.



- 3** Double-click the  **Epson** icon.

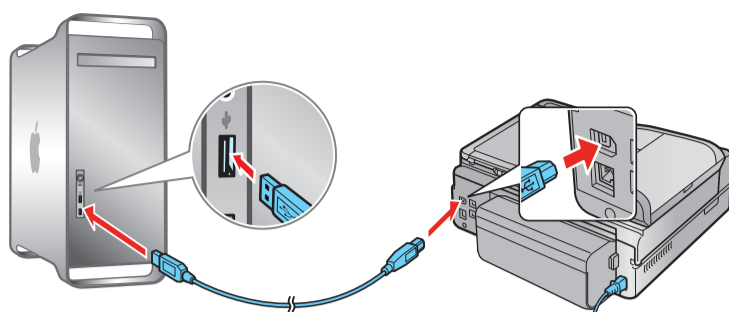
- 4** Click **Install** and follow the on-screen instructions.



- 5** When you see this screen, select **Install driver for direct USB connection** and then click **Next**.



- 6** When prompted, connect a USB cable. Use any open USB port on your computer. Make sure the Artisan 810 Series is securely connected and turned on.



Mac OS X 10.5 users: skip to step 9. Other users: continue with step 7.

- 7** When you see this screen, click **Add Printer**. Follow the steps on the right side of the screen to add the Artisan 810 Series.



- 8** Click **Next** again, if necessary.

- 9** Follow the on-screen instructions to install the rest of the software and register your Artisan 810 Series.

Be sure to register your Artisan 810 Series to receive these great benefits: 2-year limited warranty and 2-year toll-free customer support.*

- 10** When you're done, eject the CD.

You're ready to go! Enjoy your Artisan 810 Series! See your *Quick Guide* or online *Epson Information Center*.

Any questions?

Quick Guide

Basic instructions for scanning, printing, copying, faxing, and using the control panel.



Online Epson Information Center

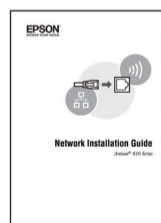
Click the desktop shortcut for easy access to the Artisan 810 Series user's guide, how-to videos, FAQs, online troubleshooting advice, and software downloads. You can also purchase paper and ink.



Note: You will need an Internet connection to view the *Epson Information Center*. If you can't find the desktop shortcut, you can also view the *Epson Information Center* at epson.com/support.

Network Installation Guide and Video

Instructions on configuring the Artisan 810 Series for a network. For a video tutorial and other information about setting up a wireless network, go to: epson.com/support/wireless



On-screen help with your software

Select **Help** or **?** when you're using your software.

Epson Technical Support

Internet Support

Visit Epson's support website at epson.com/support and select your product for solutions to common problems. You can download drivers and documentation, get FAQs and troubleshooting advice, or e-mail Epson with your questions.

Speak to a Support Representative

As a valued Artisan customer, we are providing you with an exclusive toll-free telephone number and PIN ID (Personal Identification Number) to use if you require assistance in setting up your product.

Telephone number: (866) 930-4288
PIN ID: 7082255

You may also speak with a support specialist by calling (562) 276-4382 (U.S.) or (905) 709-3839 (Canada), 6 AM to 6 PM, Pacific Time, Monday through Friday. Days and hours of support are subject to change without notice. Toll or long distance charges may apply.

Software Technical Support

ArcSoft Print Creations™
www.arcsoft.com/support

NewSoft® Presto! PageManager®
(408) 503-1212
www.newsoftinc.com
contactus@newsoftinc.com

Need paper and ink?

Try Epson premium papers with Claria® ink for better than photo lab quality results. For the right supplies at the right time, you can purchase them at Epson Supplies CentralSM at www.epson.com/ink3 (U.S. sales) or www.epson.ca (Canadian sales). You can also purchase supplies from an Epson authorized reseller. To find the nearest one, call 800-GO-EPSON (800-463-7766).

Genuine Epson Paper

Epson offers a wide variety of papers to meet your needs; visit Epson Supplies Central for more information.



Ultra Premium Photo Paper Glossy

Instant-drying high gloss paper for long-lasting photos, suitable for framing.

Genuine Epson Inks



Look for the numbers below to find your cartridges. It's as easy as remembering your number!



Color	Standard-capacity	High-capacity
● Black	—	98
● Cyan	99	98
● Magenta	99	98
● Yellow	99	98
● Light Magenta	99	98
● Light Cyan	99	98

* 1-year limited warranty to all purchasers; 2-year toll-free support and second year warranty require registration within 60 days of purchase. For California and Québec residents, failure to submit this product registration form does not diminish your warranty rights.

Epson is a registered trademark, Epson Exceed Your Vision is a registered logomark and Supplies Central is a service mark of Seiko Epson Corporation. Artisan and Claria are registered trademarks of Epson America, Inc.

General Notice: Other product names used herein are for identification purposes only and may be trademarks of their respective owners. Epson disclaims any and all rights in those marks.

This information is subject to change without notice.

© 2009 Epson America, Inc. 5/09

CPD-27513

Cut out the card to the right and keep it with you when purchasing replacement ink cartridges.

Artisan® 810 Series Ink Cartridges

Color	Standard-capacity	High-capacity
● Black	—	98
● Cyan	99	98
● Magenta	99	98
● Yellow	99	98
● Light Magenta	99	98
● Light Cyan	99	98

Printed in XXXXXX